

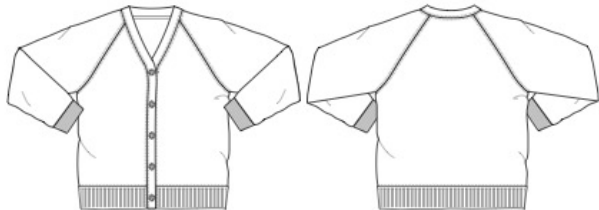
## Crofton Infant School Uniform Size Guide

Please find below some guidance from our suppliers as to size.

**Classic Raglan Cardigan-Sweat cardigan**

Ref: 3SU

- 55% Polyester / 45% Cotton
- 260-280 gsm
- 'V'-neck with raglan sleeve
- Ribbed welt and cuffs
- Twin needle stitched seams
- Female buttoning



40

Adult

50

Child

30

XXL

Child-VAT Zero Rated

TO FIT CHEST"	25	26	28	30	32	34
AGE	3/4	5/6	7/8	9/10	11/12	13

Adult-VAT Standard Rated

TO FIT CHEST"	36	39	43	47	51
SIZE	S	M	L	XL	XXL

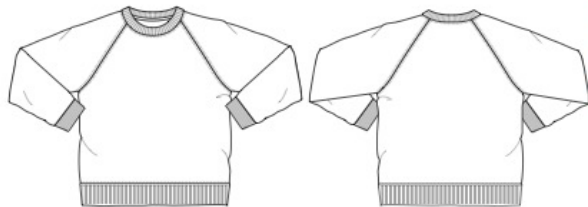
40

Black
Bottle
Classic Navy
Jade
Maroon
Navy
Red
Royal
Scarlet

**Select Raglan-Crew neck sweatshirt**

Ref: 3SR

- 65% Cotton / 35% Polyester
- 320-340 gsm
- Ribbed welt and cuffs
- Soft but durable



40

Adult

50

Child

30

XXL

Child-VAT Zero Rated

TO FIT CHEST"	25	26	28	30	32	34
AGE	3/4	5/6	7/8	9/10	11/12	13

Adult-VAT Standard Rated

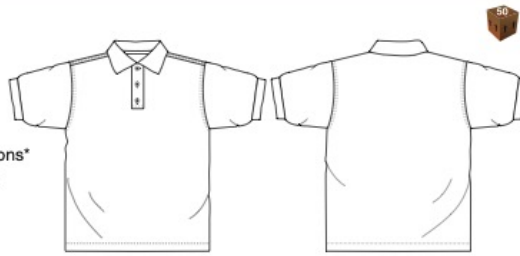
TO FIT CHEST"	36	39	43	47	51
SIZE	S	M	L	XL	XXL

Black
Bottle
Burgundy
Claret
Dark Royal
Deep Royal
Jade
Marl Grey
Navy
Purple
Red

## Penthouse Polo

Ref: 3PP

- Easy care 65% Polyester / 35% Cotton
- 200-210 gsm
- Unique anti-pill fabric
- Taped neck seam
- Razor sharp plackets
- Flat knit collar and ribbed cuffs
- Mock horn buttons with optional self coloured buttons\*
- Tight knit makes it ideal for embroidery and printing



Child-VAT Zero Rated

TO FIT CHEST™	22	24	26	28	30	32	34
AGE	2yrs	3/4	5/6	7/8	9/10	11/12	13

Adult-VAT Standard Rated

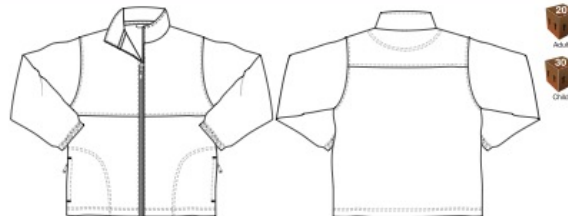
TO FIT CHEST™	36	39	43	47	51	56
SIZE	S	M	L	XL	XXL	60's



## Polar Fleece

Ref: 3JP

- 100% anti-pill Polyester polar fleece
- 300gsm
- Top stitched seam detail
- Two zip pockets with matching puller tabs
- Full length zip
- Elasticated cuffs and drawcord
- BS EN 14682 compatible in-pocket toggle system
- Hanging loop and taped neck seam



Child-VAT Zero Rated

TO FIT CHEST™	25	26	28	30	32	34
AGE	3/4	5/6	7/8	9/10	11/12	13

Adult-VAT Standard Rated

TO FIT CHEST™	36	39	43	47	51	57
SIZE	S	M	L	XL	XXL	60's



# PE T-Shirt

## Champion T-Crew neck T-shirt

Ref: 3TC

- 100% Cotton
- 165 gsm
- Ring spun combed Cotton
- Ideal for embroidery and printing
- Ribbed neckband
- Open hemmed sleeves
- Taped neck seam
- Consistent colours and fabric



Child-VAT Zero Rated

TO FIT CHEST"	23	24	26	28	30	32
AGE	2yrs	3/4	5/6	7/8	9/10	11/13

Adult-VAT Standard Rated

TO FIT CHEST"	35	38	42	46	51
SIZE	S	M	L	XL	XXL



## Purple Joggers

Age/Size	3/4	5/6	7/8	9/10
Half waist in cm - Fully relaxed	23	24	25	26
Half waist in cm - Fully extended	38	41	44	46
Half waist in INCHES - Fully relaxed	9.1	9.4	9.8	10.2
Half waist in INCHES - Fully extended	15.0	16.1	17.3	18.1

## Purple PE shorts

Age/Size	3/4	5/6	7/8
Waist	18/20	22/24	26/28

## Waterproof Jacket

Age	Child Height	Chest
3 - 4 Years	98 - 104 cm	55 - 57 cm
5 - 6 Years	110 - 116 cm	59 - 61 cm

## Waterproof trousers

Age	Child Height	Waist
3-4 Years	98 - 104 cm	53 - 54 cm
5-6 Years	110 - 116 cm	55 - 57 cm